

PROFHILO®

BAP TECHNIQUE (BIO AESTHETIC POINTS)

This injection technique allows you to focus the PROFHILO® action where the skin appears relaxed and aged. Concentrating a defined volume of the compound in a few anatomically receptive points progressively diffuses through the interstitial spaces, bringing a natural and lasting refreshed look to the entire malar and sub-malar areas.

- ✓ **5 BAP injection points per side:** 0.2 ml per bolus in the deep dermis
- ✓ **2 treatments** with a one month interval, followed by a maintenance treatment after two months depending on the level of aging.



Hyaluronic Acid Experts

PROFHILO®

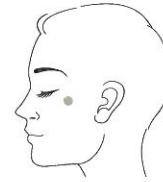
HOW TO IDENTIFY THE BAP

ATTENTION!

It should be noted that these indications are suggestions to be adapted to the specific needs and morphology of each patient's face.

ZYGOMATIC PROTRUSION

be sure to stay at least 2 cm away from the external corner of the eye.



1

NASAL BASE

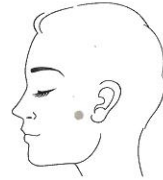
- draw a line connecting the nostril and tragus
- draw a perpendicular line starting from the pupil
- locate the injection point at the intersection of the 2 lines



2

TRAGUS

be sure to stay 1 cm anterior to the bottom of the tragus



3

CHIN

- draw a vertical line in the center of the chin
- draw a perpendicular line one third from the top of the vertical line
- from the point of intersection move 1.5 cm towards the oral commissures



4

MANDIBULAR ANGLE

1 cm above the mandibular angle



5